

 **DRESSTA**®

534E-LA
LANDFILL COMPACTOR



■ **Net Horsepower 169 kW (227 hp)**

■ **Compaction ratio 1:3.5**

■ **Operating Weight**

- w/ blade 22 900 kg (50,485 lb)

- w/ bucket 24 200 kg (53,351 lb)

The best in the business for productivity and performance features

Air filtration, ventilation and air conditioning

169 kW (227 hp) Cummins QSC8.3 engine meets EU Stage III A and EPA Tier3 emission standard

3-in-1 cooling module with new variable speed fan ensures optimum performance of the engine and drive train

Rear grill, vertically hinged

Quick and easy daily maintenance and checks

Striker bars, front and rear

Special design of padfoot and chopper wheels for maximum productivity

534E COM

Built for tough lan



Ergonomically designed joystick
for superb attachment control

Parallel loader linkage
with sealed pivot points

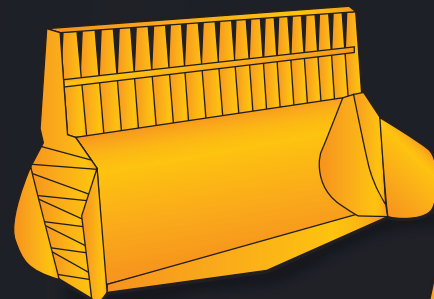
Landfill blade and buckets
with trash rack provide
an excellent load retention

Full length underside protection
and anti-wrap axle guards

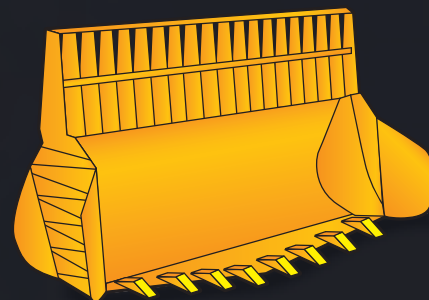
mpactor ***ndfill applications***



Dressta offer a high quality
the versatility and



Spade nose buckets
3.4 m³ (4.5 yd³)

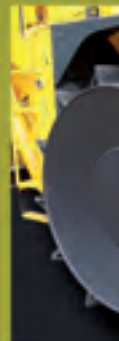


Blade and bucket models



Cummins QSC8.3 engine meets EU Stage IIIA emissions standards. The QSC advanced electronics provide enhanced engine performance with higher torque and better throttle response at every rpm.

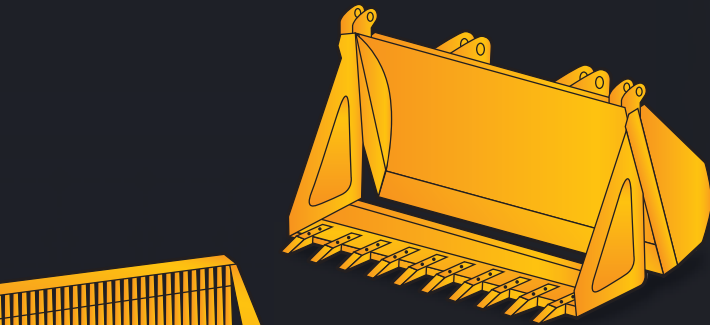
With its ideal combination of electronic controls and durable block design, this engine is ready to meet even toughest machine work conditions. Long maintenance intervals, better cold starting and quieter operation provide improved operator comfort.



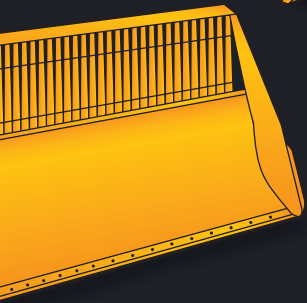
Trash protection

Striker bars located behind the front and rear wheels provide protection from trash that can be carried by wheels and prevent them from plugging on clay or muddy sites.

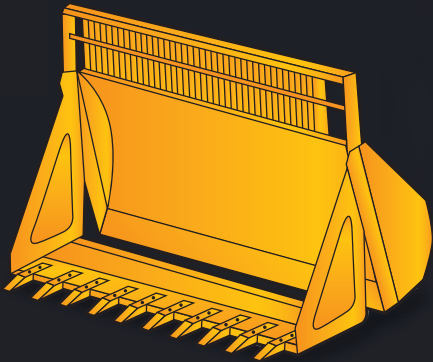
Quality attachments that enhance
and effective compaction



Multi-purpose buckets
2.6 m³ (3.4 yd³)



Landfill blade
2.0 m³ (2.6 yd³)



- the perfect landfill partnership

Designed to deliver all of
the outstanding performance
characteristics of our standard
loader, as well as plenty
of special integrated features.
Maximize productivity
and durability on all types
of waste sites.



n
wheels provide
and keep the wheels
es.



Cylinder guards

Special cylinder guards are designed
for the compactor equipped
with multi-purpose bucket.
Reinforced guards improve strength
and protect cylinder, cylinder rod
and hydraulic lines from accidental damage.



Proven protection

The entire undercarriage, drive shafts,
brake system and radiator are protected
with guards.

Specification

ENGINE

* Make and model Cummins QSC8.3
 Type In-line, 6-cylinder
 Aspiration Turbocharged and CAC
 Fuel system HPI Electronic
 Gross Horsepower, SAE J1995 179 kW (240 hp)
 ** Net Horsepower, SAE J1349/ISO 9249 169 kW (227 hp)
 Rated rpm 2200 rpm
 Maximum torque @ 1500 rpm 1085 Nm (800 ft-lb)
 Displacement 8.3 l (505 in³)
 Bore and stroke 114 x 135 mm (4.49" x 5.32")
 Air cleaner dry type with service indicator

* Meets EU Stage IIIA and EPA Tier 3 emission regulations

** Net Horsepower at the minimum speed of hydraulic fan 177 kW (237 hp)

TRANSMISSION & TORQUE CONVERTER

Electrically controlled, countershaft type powershift transmission,
 2 speeds forward and 2 reverse.
 Single stage, single phase type torque converter, 2.7 to 1 stall
 ratio.

TRAVEL SPEEDS

Gear	Forward & Reverse	
	km/h	(mph)
1st	8.2	(5.1)
2st	16.4	(10.2)

AXLES & FINAL DRIVES

Full-floating axle shafts and planetary final drive. Four wheel drive.
 Front axle fixed, rear axle oscillates a total of 26°. Vertical
 wheel travel of 480 mm (18.9"). Conventional differentials.

STEERING SYSTEM

Articulated frame. Hydrostatic type, providing smooth, responsive
 steering at any engine speed.
 Auxiliary steering - ground driven.
 Articulation, right and left 40°
 Turning radius outside corner of bucket 6.65 m (21'10")

BRAKES

Service – four wheel, air-over-hydraulic, dry disc.
 Parking – air release, spring apply, disc type, on front axle with
 indicator light.

LOADER LINKAGE

Parallel loader linkage with sealed pivot points; extended
 lubrication intervals.

HYDRAULIC SYSTEM

Reservoir with sight gauge and 10-micron return type filters.
 Pumps, gear type driven from torque converter.
 Output @ 2200 rpm and 16 MPa (2,320 psi):
 - main, hydraulic equipment - 188 l/min (50 gpm)
 - steering and hydraulic equipment - 173 l/min (46 gpm)
 - fan drive - 40 l/min (10.6 gpm).
 Valve: Low effort, 2-spool or 3-spool with relief valve.
 Relief valve pressure 16 MPa (2,320 psi).
 Cylinders (double acting) – hardened chrome plated piston rods.

Boom – Bore and Stroke (2) 160 x 860 mm (6.3" x 33.8")
 Bucket – Bore and Stroke (2) 160 x 470 mm (6.3" x 18.5")
 Steering – Bore and Stroke (2) 110 x 442 mm (4.3" x 17.4")

REFILL CAPACITIES

	Liter	(US gal)
Fuel tank	350	(92.5)
Cooling system	35	(9.2)
Crankcase w/filters	23.8	(6.3)
Transmission system	133	(35.1)
Differential & final drive, each	42	(11.1)
Hydraulic reservoir	230	(60.8)
Hydraulic system	310	(81.9)

INSTRUMENTATION

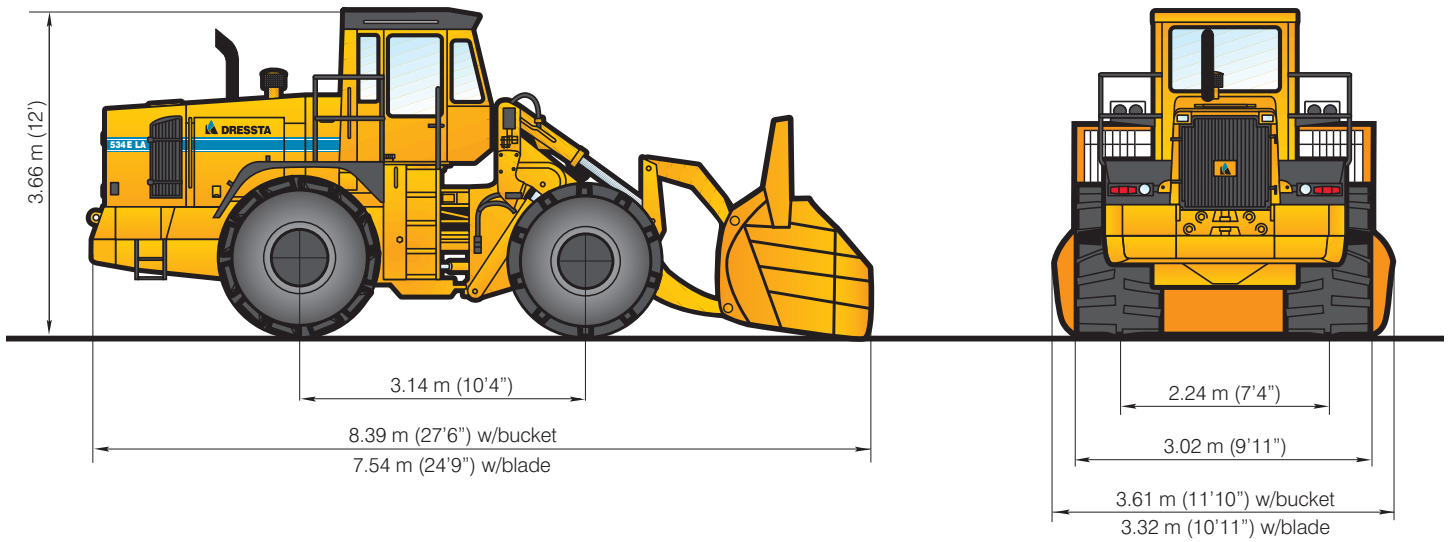
Gauges: brake system air pressure, engine coolant temp., engine
 lube oil pressure, engine oil temp., torque converter oil temp., fuel
 level, speedometer, voltmeter, hourmeter, tachometer.

Warning lights: engine coolant overheat, low engine lube oil
 pressure, low air pressure, low coolant level, ground driven
 steering, low fuel level, parking brake applied, filter service
 indicator (hydraulic and steering system, air cleaner).

Visual sight gauges for hydraulic reservoir and transmission.

OPERATING WEIGHT

Includes standard equipment:
 - with landfill blade 22900 kg (50,485 lb)
 - with bucket 3.4 m³ 24200 kg (53,351 lb)



STEEL DRUM WHEELS

Our steel padfoot and chopper wheels provide excellent traction, stability and efficient compaction.

PADFOOT WHEELS - FRONT	
Drum width	0.78 m (30.7")
Diameters:	
- over pads	1.62 m (64")
- drum only	1.40 m (55")
Pad length	124 mm (4.9")
Number of pads	50
Number of pad rows	10
Ground pressure	117.1 kN/m ² (17.0 psi)

CHOPPER WHEELS - REAR	
Drum width	0.78 m (30.7")
Diameters:	
- over blades	1.62 m (64")
- drum only	1.40 m (55")
Blade length	345 mm (13.6")
Number of blades	24
Number of blade rows	12
Ground pressure	117.4 kN/m ² (17.1 psi)



534E-LA

LANDFILL COMPACTOR



STANDARD EQUIPMENT

- Air cleaner, dry type with service indicator
- Air filtration and ventilation
- Alarm, back-up
- Alternator, 70 A
- Auxiliary steering, ground driven
- Axles, conventional differential, outboard planetary
- Back-up lights
- Batteries, (2) 12 V, 1150 CCA
- Beacon light, rotating
- Boom kickout
- Brakes; service - four wheel, air-over-hydraulic, dry disc; parking - disc type, front axle mounted
- Cab with heater/pressurizer/defroster, inside mirror, sun visor, dome light, wipers w/washers
ROPS/FOPS, 2 post (SAE J1040 and J231)
- CE accessories: fire extinguisher, first aid kit, grease gun, tools
- Cooling module; includes radiator, transmission and torque converter oil cooler, charge air cooler
- Cooler, equipment hydraulic oil
- Counterweight front, 260 kg (573 lb)
- Engine hood, sloped
- Fan, hydraulically driven, suction type, variable speed
- Fenders, rear
- Filters, engine oil and fuel, hydraulics, transmission-torque converter
- Grill, rear, vertically hinged
- Guards, front axle, full length underside protection, radiator, anti-wrap axle guard
- Horn, electric
- Hydraulic control, single lever (joystick)
- Instruments:
 - Gauges: brake system air pressure, engine coolant temp., engine lube oil pressure, engine oil temp., fuel level, torque converter oil temp., hourmeter, tachometer, voltmeter
 - Sight gauges: hydraulic reservoir, transmission oil
 - Warning lights: engine coolant overheat, low engine lube oil pressure, low air pressure, low coolant level, ground driven steering, low fuel level, parking brake applied, filter service indicators (hydraulic and steering system, air cleaner)
- Ladder, left and right side
- Lights, working and travelling, 4 F and 2 R, 2 stop and tail, turn signals
- Master electrical disconnect
- Mirrors, LH and RH, rearview
- Seat belt (SAE J386)
- Seat, suspension type, adjustable height, tilting, forward and backward movement
- Starting, 24 V
- Starting aid - air grid heater
- Steering, hydrostatic, articulated frame
- Striker bars, front and rear
- Torque converter, single stage
- Towing pin
- Transmission, powershift, electrically controlled, 2 speeds forward and 2 reverse
- Valve, 2-spool
- Vandalism protection
- Wheels:
 - padfoot, steel, 2 front
 - chopper, steel, 2 rear

OPTIONAL ATTACHMENTS

- Air conditioner and heater/pressurizer/defroster
- AM/FM CD radio
- Centralized lubricating system
- Guards (6), front lights, working and travelling
- Hydraulic kit; includes 3-spool valve, piping, controls and auxiliary lever
- Lights, additional, 2 F and 2 R, cab mounted
- 1000-1500-2000 h maintenance packages
- Speedometer
- Superstructure with sound suppression package (meets CE requirements)
- Working attachments:
 - bucket, spade nose w/trash rack, 3.4 cu.m (4.5 cu.yd)
 - bucket, spade nose with teeth, 3.4 cu.m (4.5 cu.yd) w/trash rack
 - landfill blade w/trash rack, 2 cu.m (2.6 cu.yd)
 - multi-purpose bucket with teeth, 2.6 cu.m (3.4 cu.yd)
 - multi-purpose bucket with teeth, trash rack and cylinder guards, 2.6 cu.m (3.4 cu.yd)

Specifications subject to change without notice. Illustrations and pictures may include optional equipment and may not include all standard equipment. Compaction rate is based upon consistent average travel speed, thickness of material and material densities. DRESSSTA Co. Ltd. does not take responsibility for compaction rates achieved that equate to more or less than those promoted.

DRESSSTA Co.Ltd.

Kwiatkowskiego 1, 37-450 Stalowa Wola, POLAND
tel. +48 (15) 813 5252, 813 4556 fax: +48 (15) 844 4714
www.dresssta.com.pl